

FC Water park Slides

Data from USGS and Colorado
Division of Water Resources

How Does the Poudre Compare to Golden/Lyons?

	Days at or above Flow rate		
Flow Rate	Fort Collins	Lyons	Golden
50 cfs	153	150	258
100 cfs	101	111	154
200 cfs	77	66	95
300 cfs	58	42	69
400 cfs	49	9	56
500 cfs	39	0	44
1000 cfs	6	0	0
2000 cfs	0	0	0

- Fort Collins generally has higher flows than Lyons!
 - And the flows last longer too
 - Caveat – Lyons data is for Black Bear/Arn’s Hole, not October Hole
- Above 100cfs, FC flows are similar to Golden
- Note:
 - FC & Golden data are USGS 38 year averages
 - Lyons data are CO Div of Water 12 year ('00-'12) averages

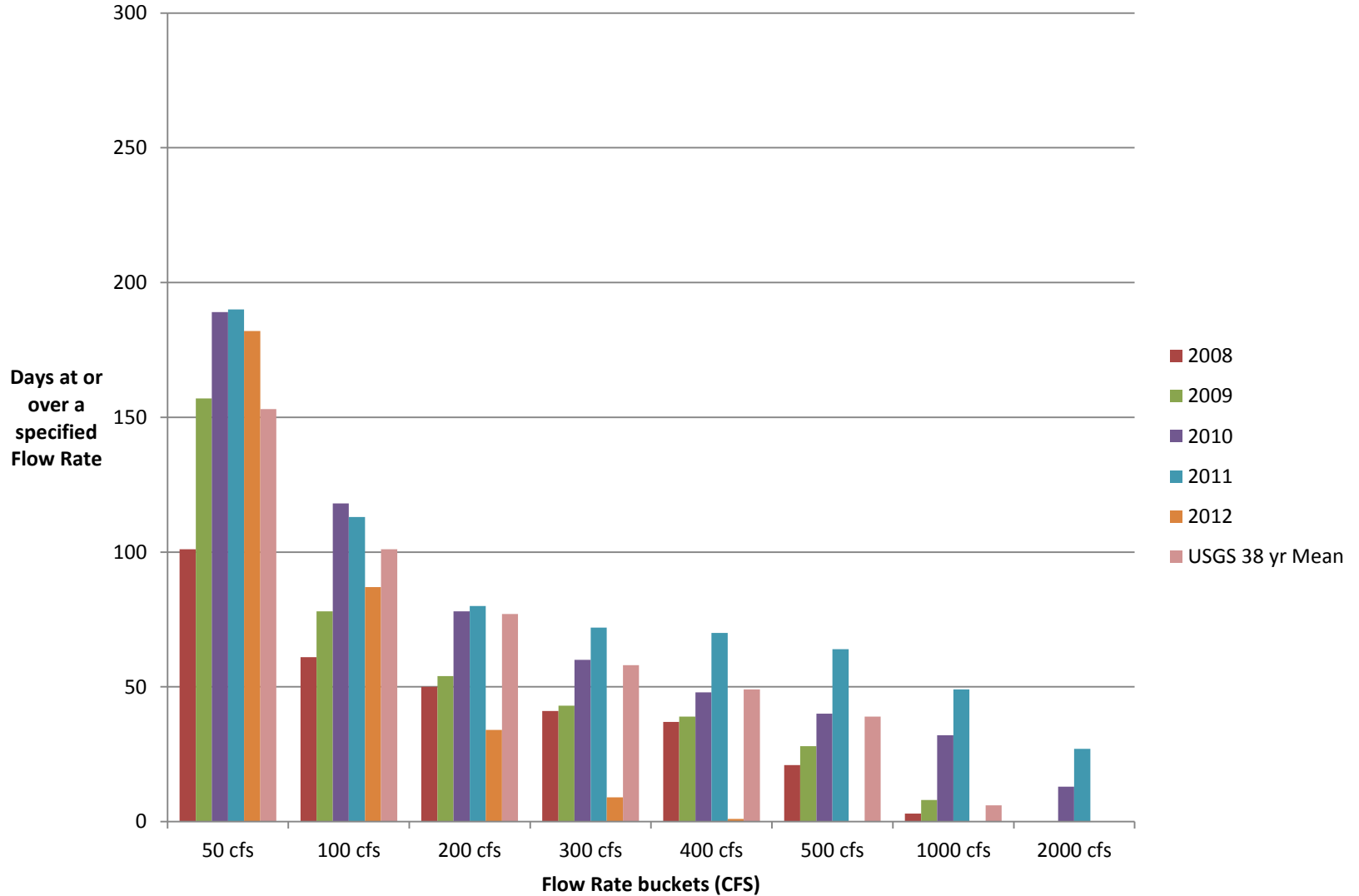
How Does the Poudre Compare to Golden/Lyons?

2008-2012 Data

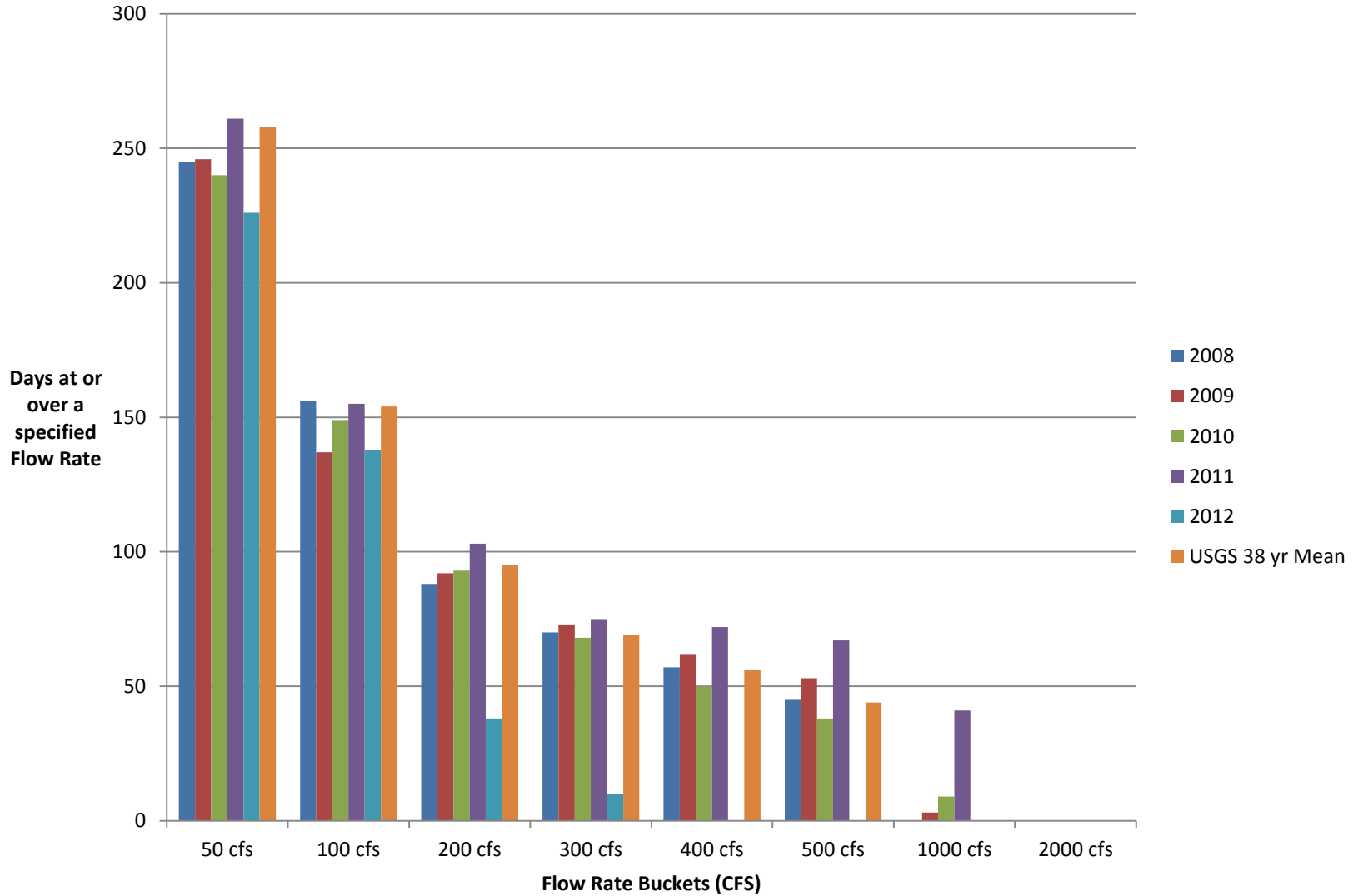
	Days at or above Flow rate		
Flow Rate	Fort Collins	Lyons	Golden
50 cfs	164	145	244
100 cfs	91	104	147
200 cfs	59	58.4	83
300 cfs	45	42.2	59
400 cfs	39	29.6	48
500 cfs	31	17.2	41
1000 cfs	18	1.4	11
2000 cfs	8	0	0

- Looking at only the last 5 years (2008-12) Fort Collins is similar to Lyons, but with more high flow days.
 - Caveat – Lyons data is for Black Bear/Arn’s Hole, not October Hole
- Note:
 - FC & Golden data are 5 year averages based off of USGS data
 - Lyons data are 5 year averages based off of CO Division of Water data

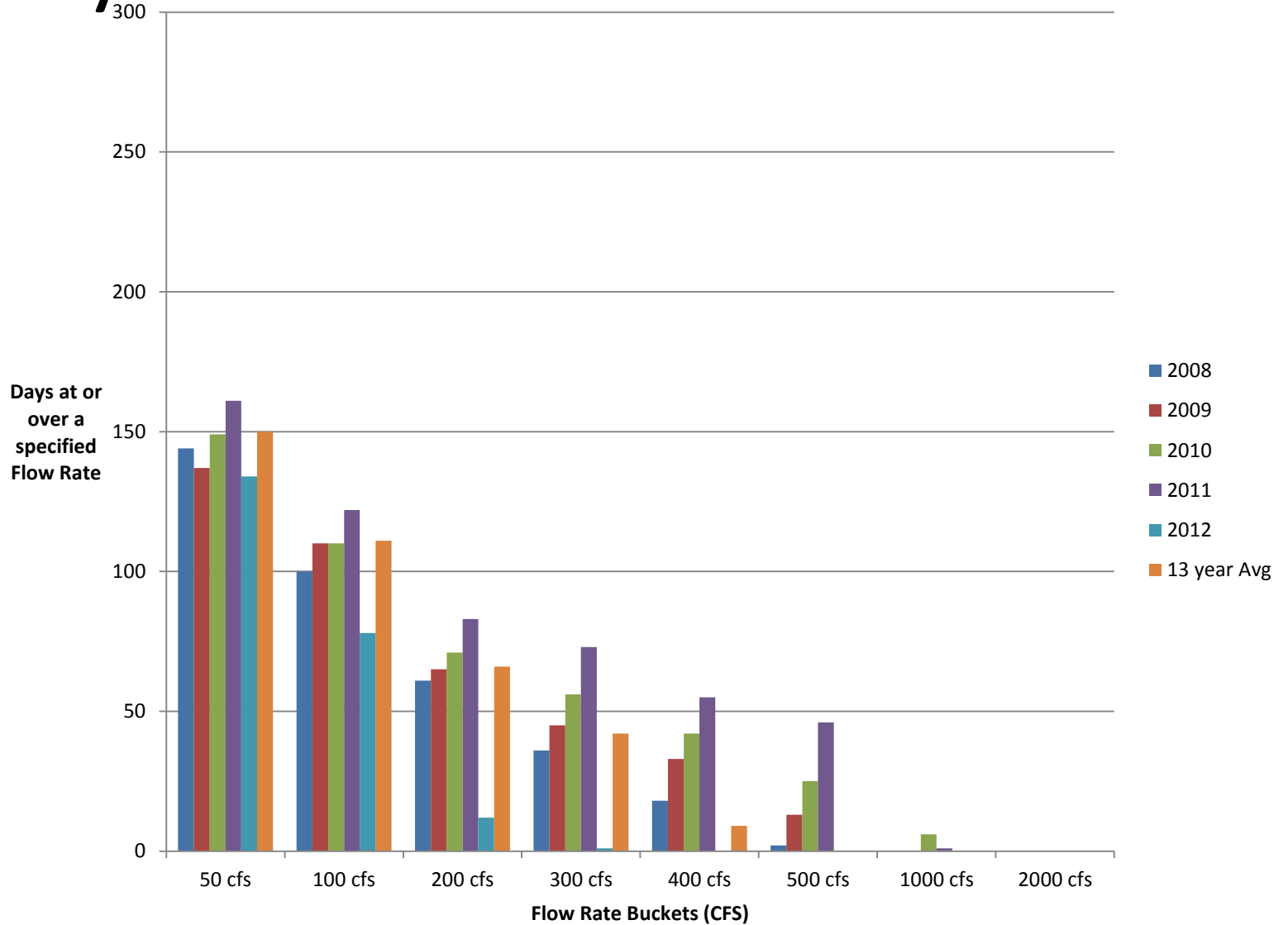
Days at Flow Rates for Poudre



Days at Flow Rates for Clear Creek

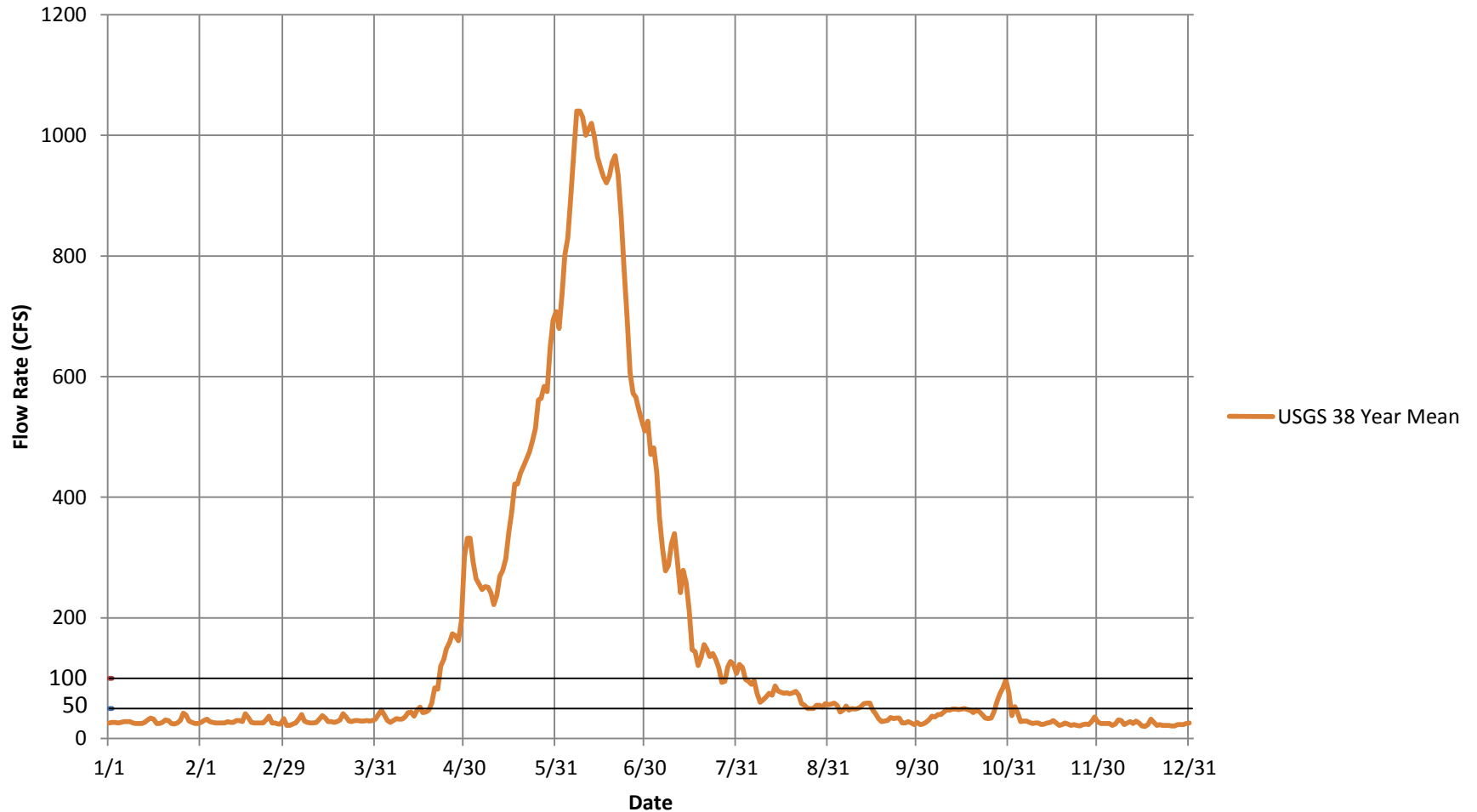


Days at Flow Rates for St. Vrain



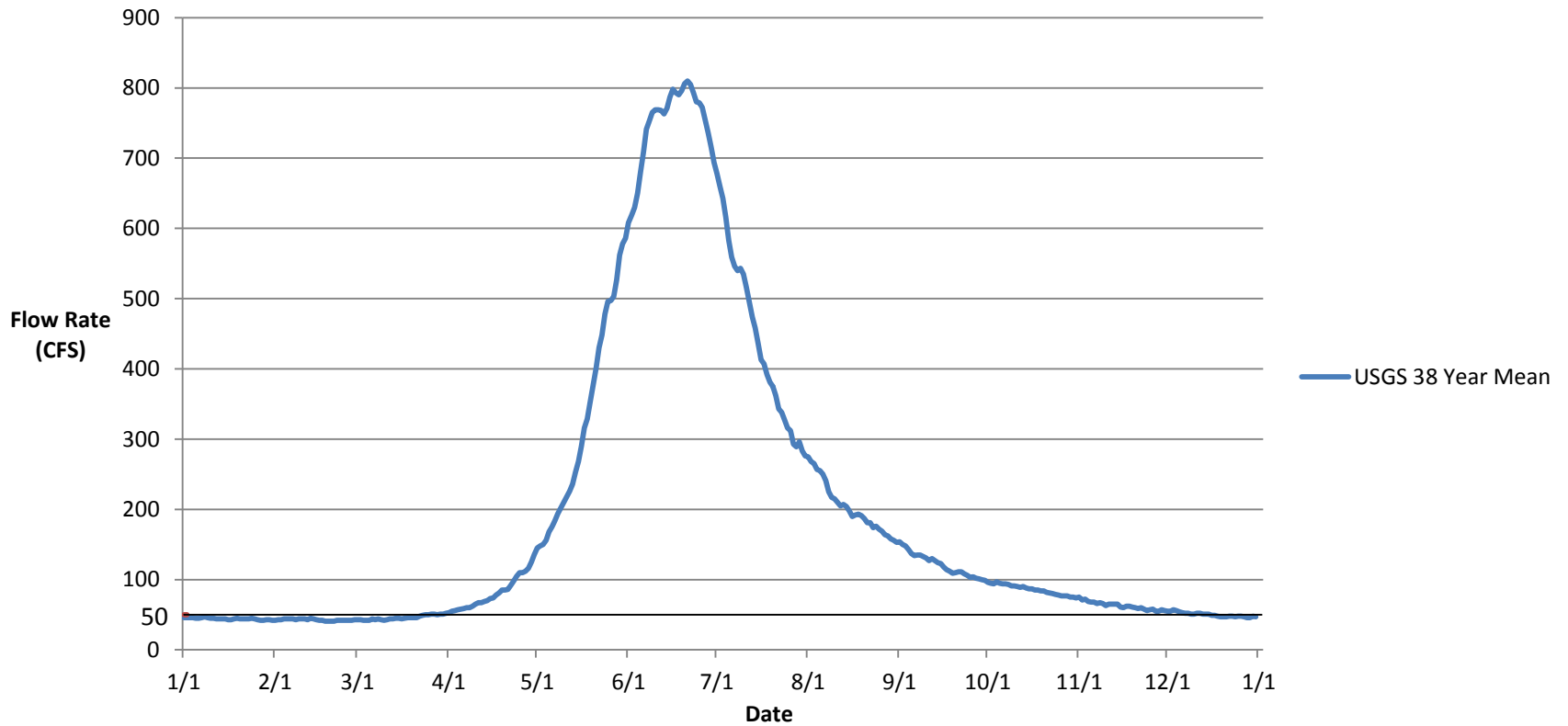
USGS 38 year Avg Plot for Poudre

USGS 38 year Average Flow Rate at Lincoln Street Bridge



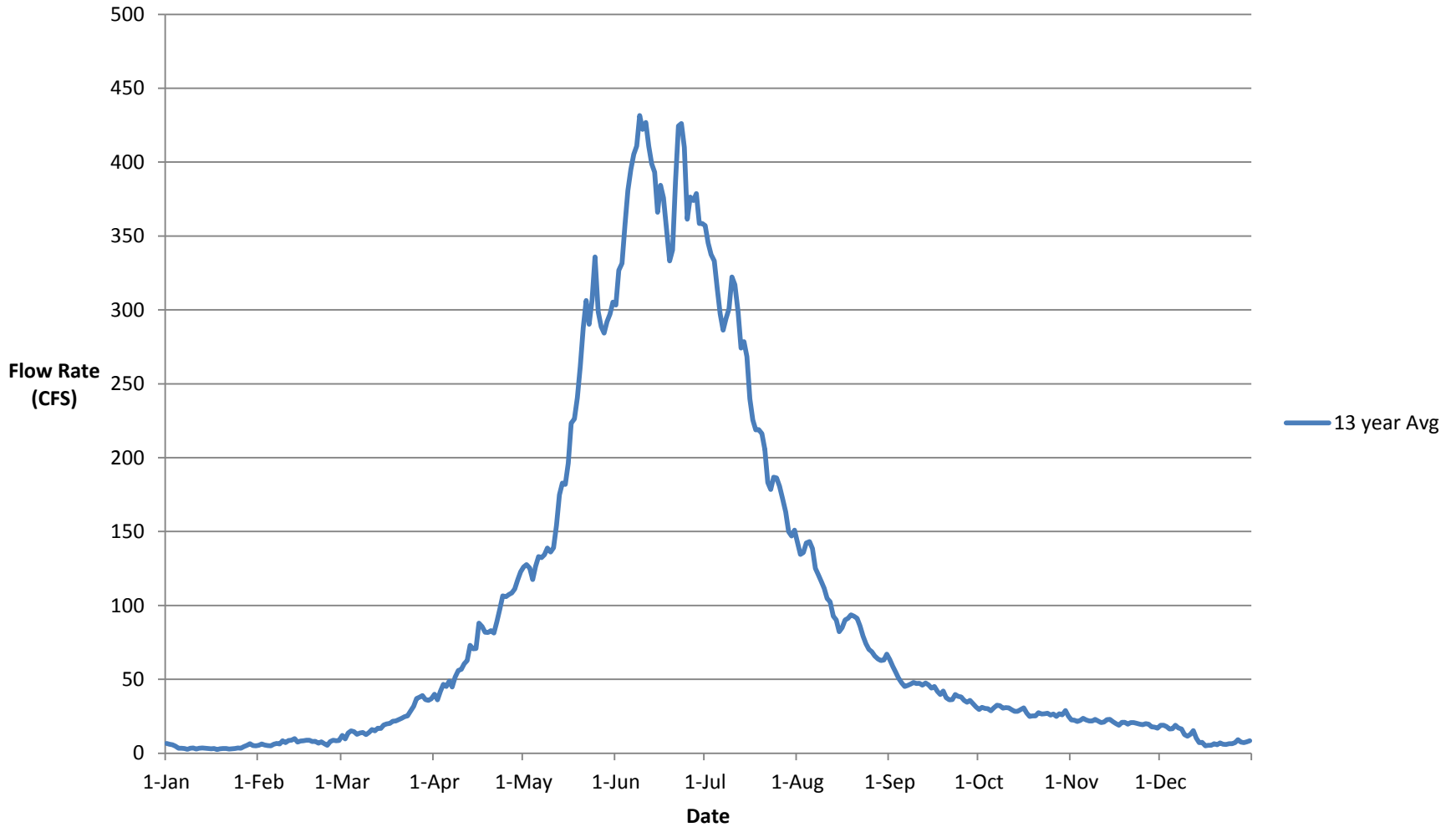
USGS 38 year Avg Plot for Clear Creek

USGS 38 year Average for Clear Creek



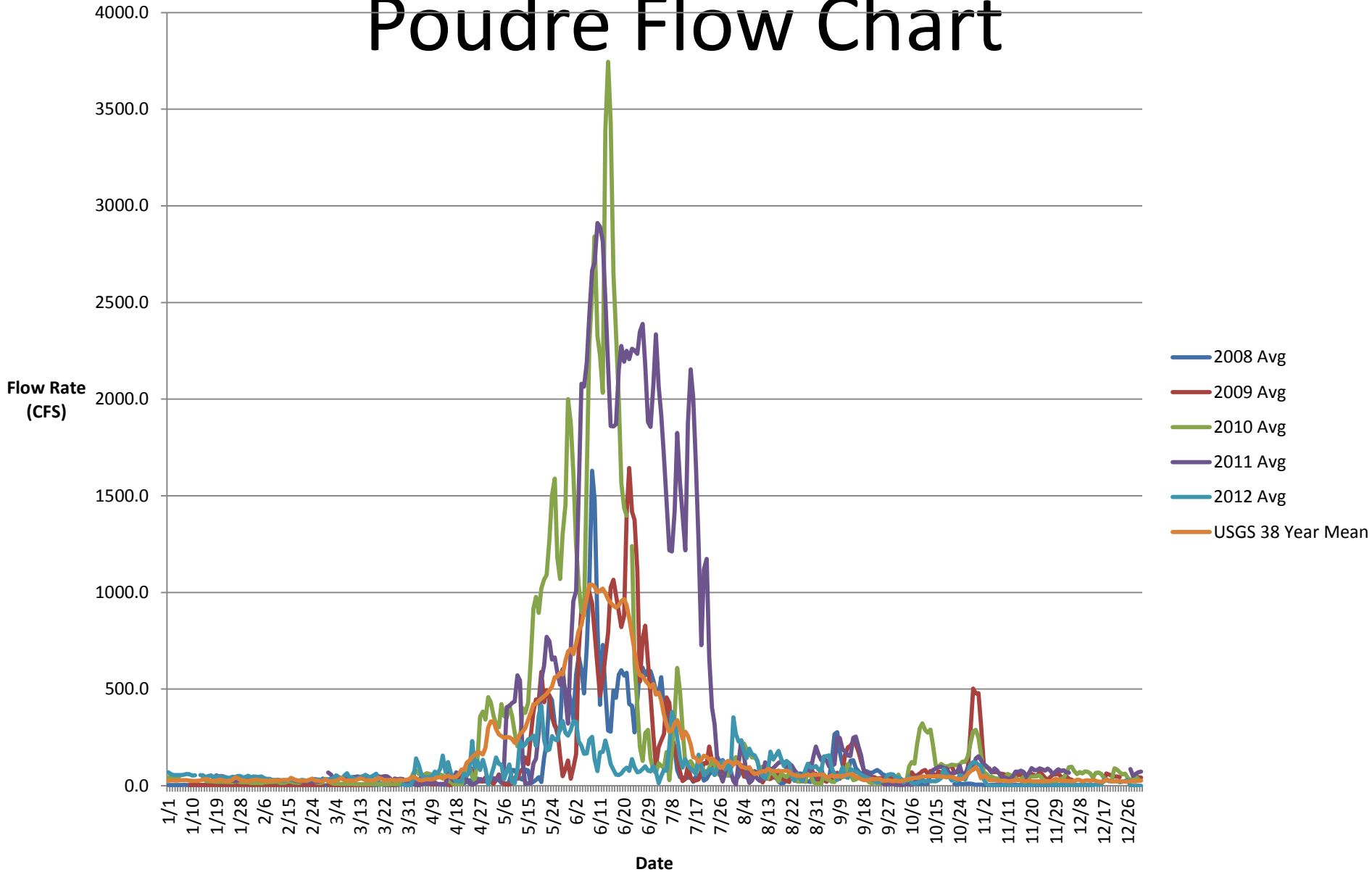
DWR 13 year Avg Plot for the St Vrain

CO DWR 13 Year Average for the Saint Vrain ('00-'12)



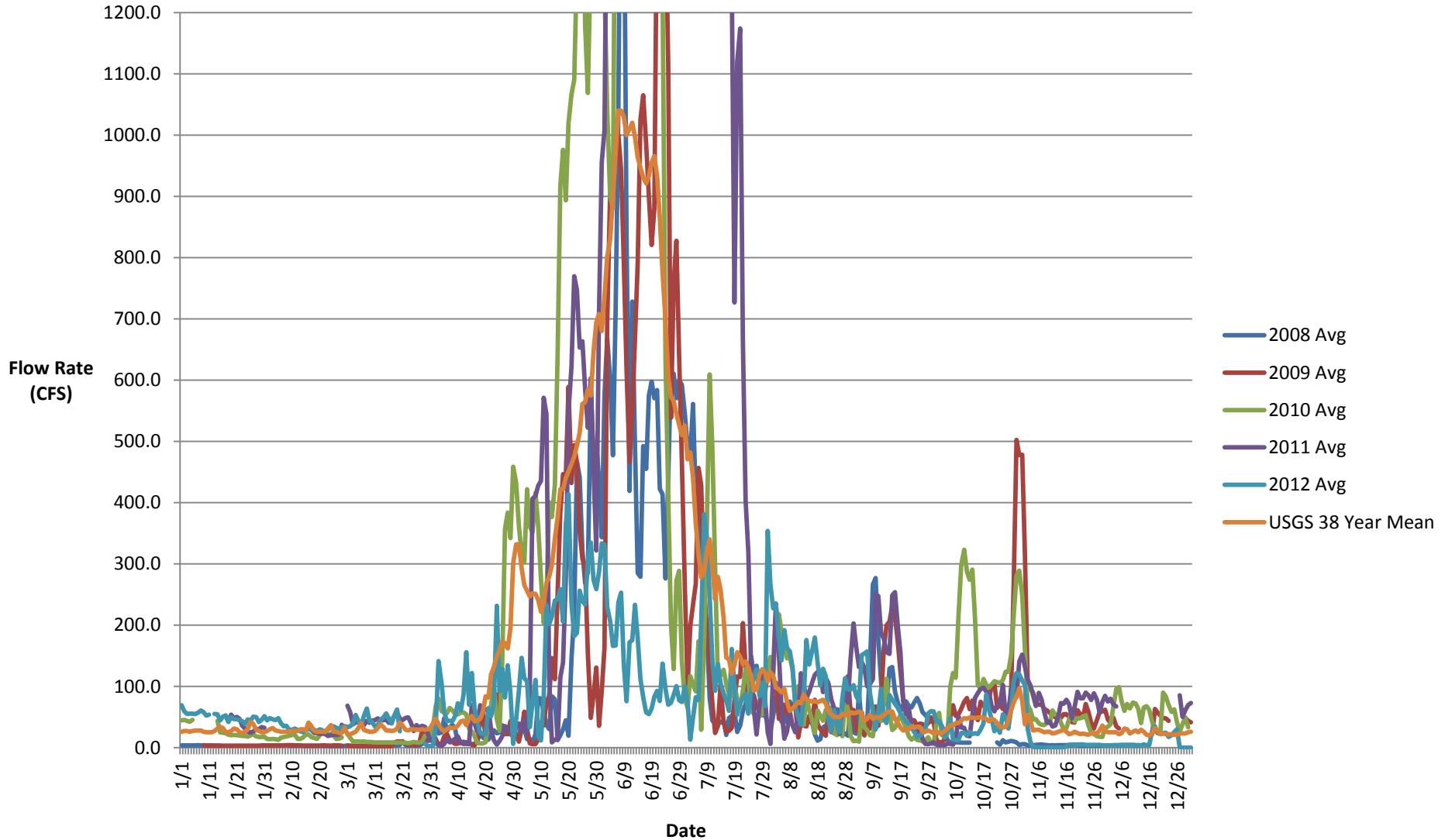
Poudre River Flow Rate at Lincoln Bridge

Poudre Flow Chart



Poudre Flow Chart (Zoom)

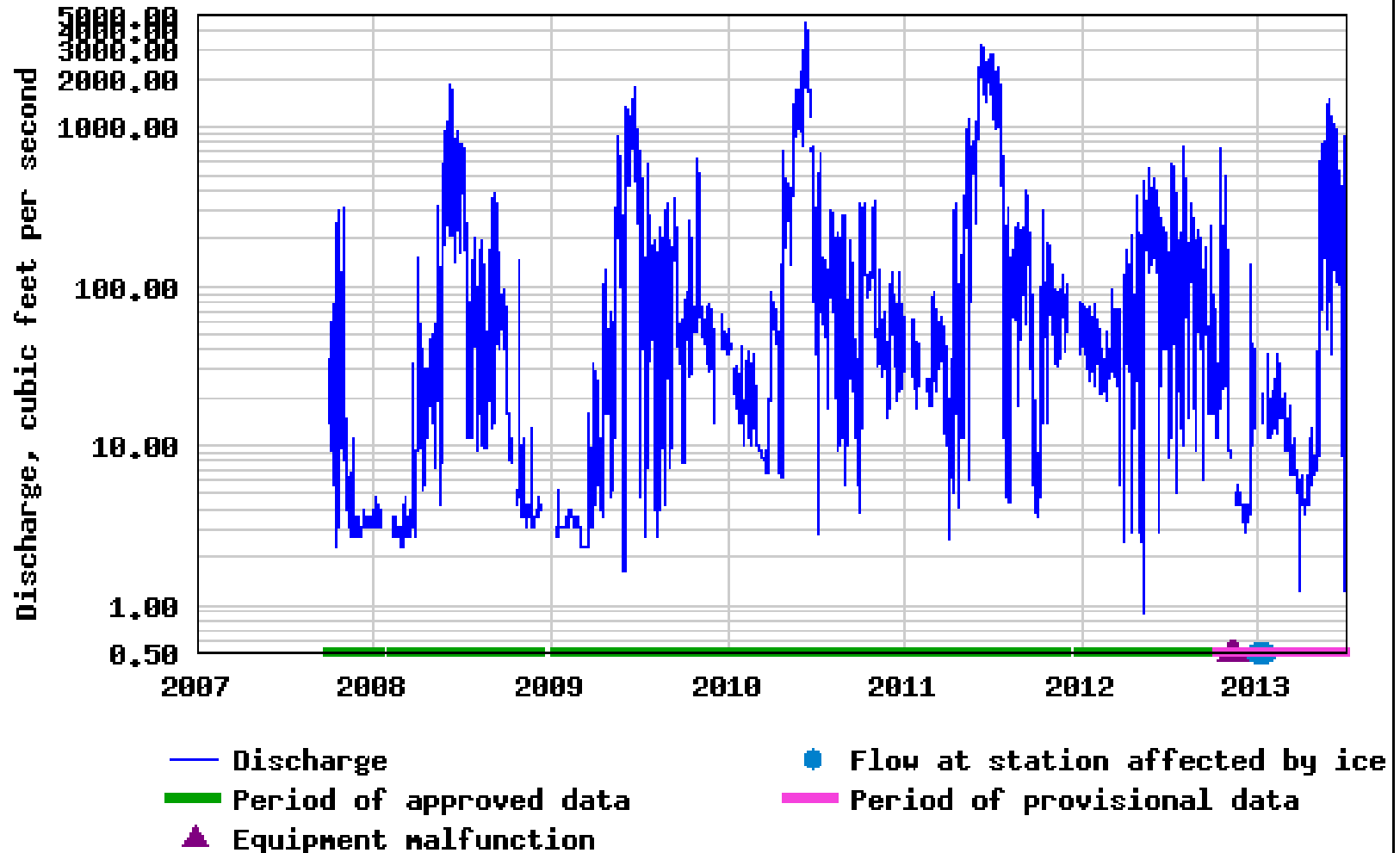
Poudre River Flow Rate at Lincoln Bridge



USGS Plot for Poudre



USGS 06752260 CACHE LA POUDRE RIVER AT FORT COLLINS, CO

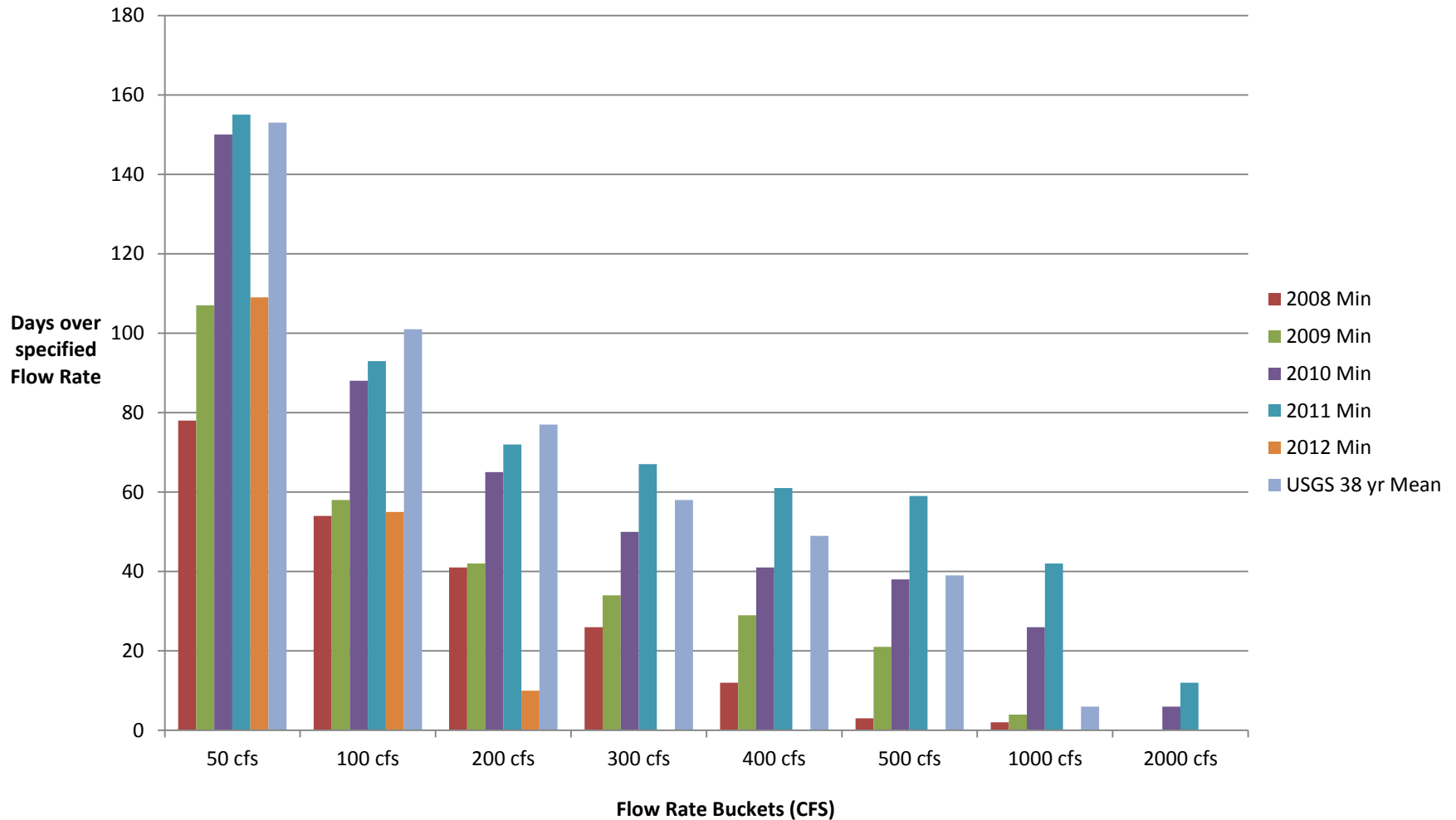


Data Sources

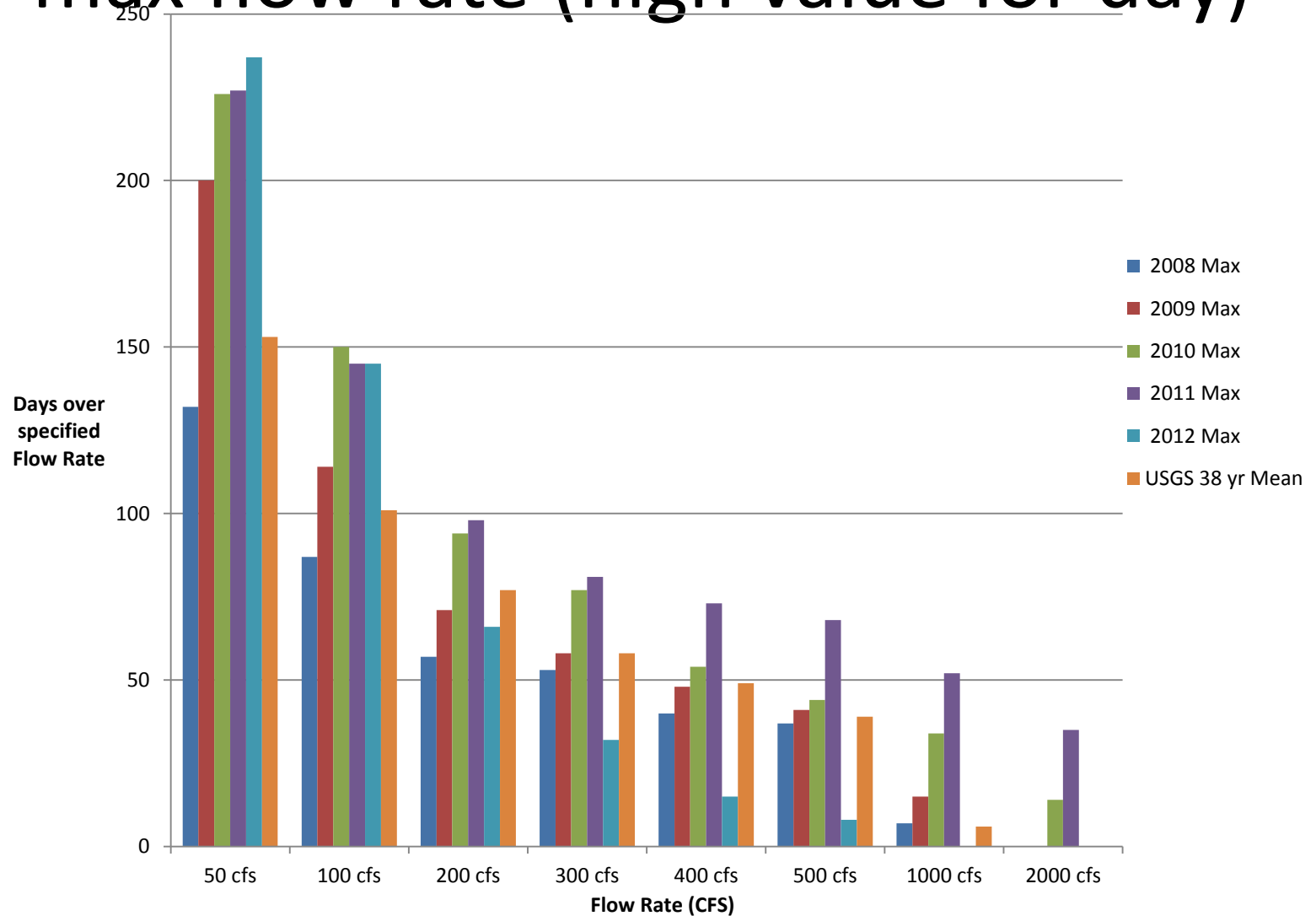
- Poudre: (USGS)
 - http://nwis.waterdata.usgs.gov/nwis/uv?cb_00060=on&format=rdb&period=&begin_date=2000-01-01&end_date=2013-06-27&site_no=06752260
- Lyons: (CO DWR)
 - http://www.dwr.state.co.us/SurfaceWater/data/detail_graph.aspx?ID=SVCLYOCO
- Golden: (USGS)
 - http://nwis.waterdata.usgs.gov/nwis/uv?cb_00060=on&format=rdb&period=&begin_date=2000-01-01&end_date=2013-06-27&site_no=06719505

BACKUP AFTER HERE

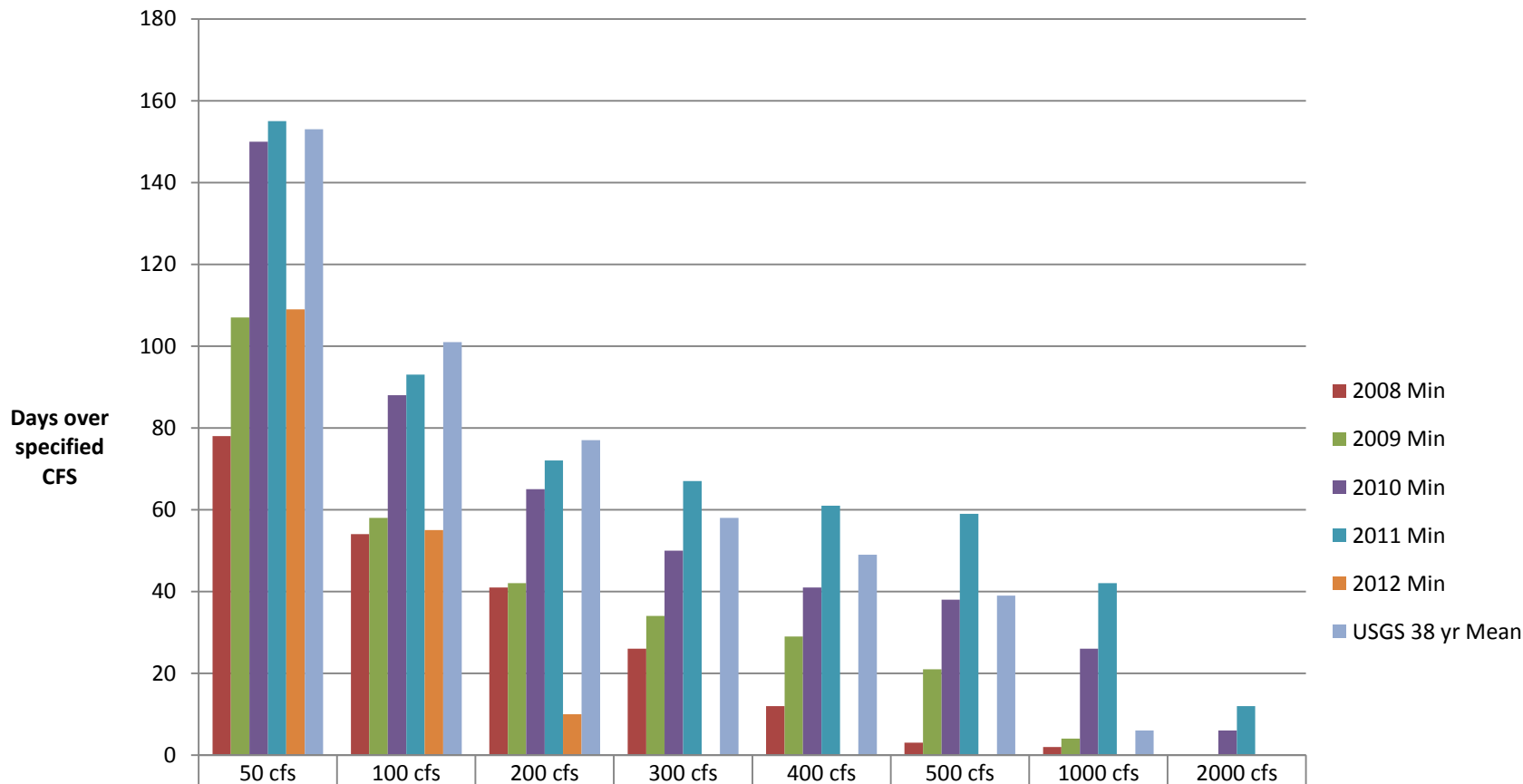
Stream Flow at Lincoln St for minimum flow rate (low value for day)



Stream Flow at Lincoln St for max flow rate (high value for day)



Stream Flow at Lincoln St for minimum flow rate

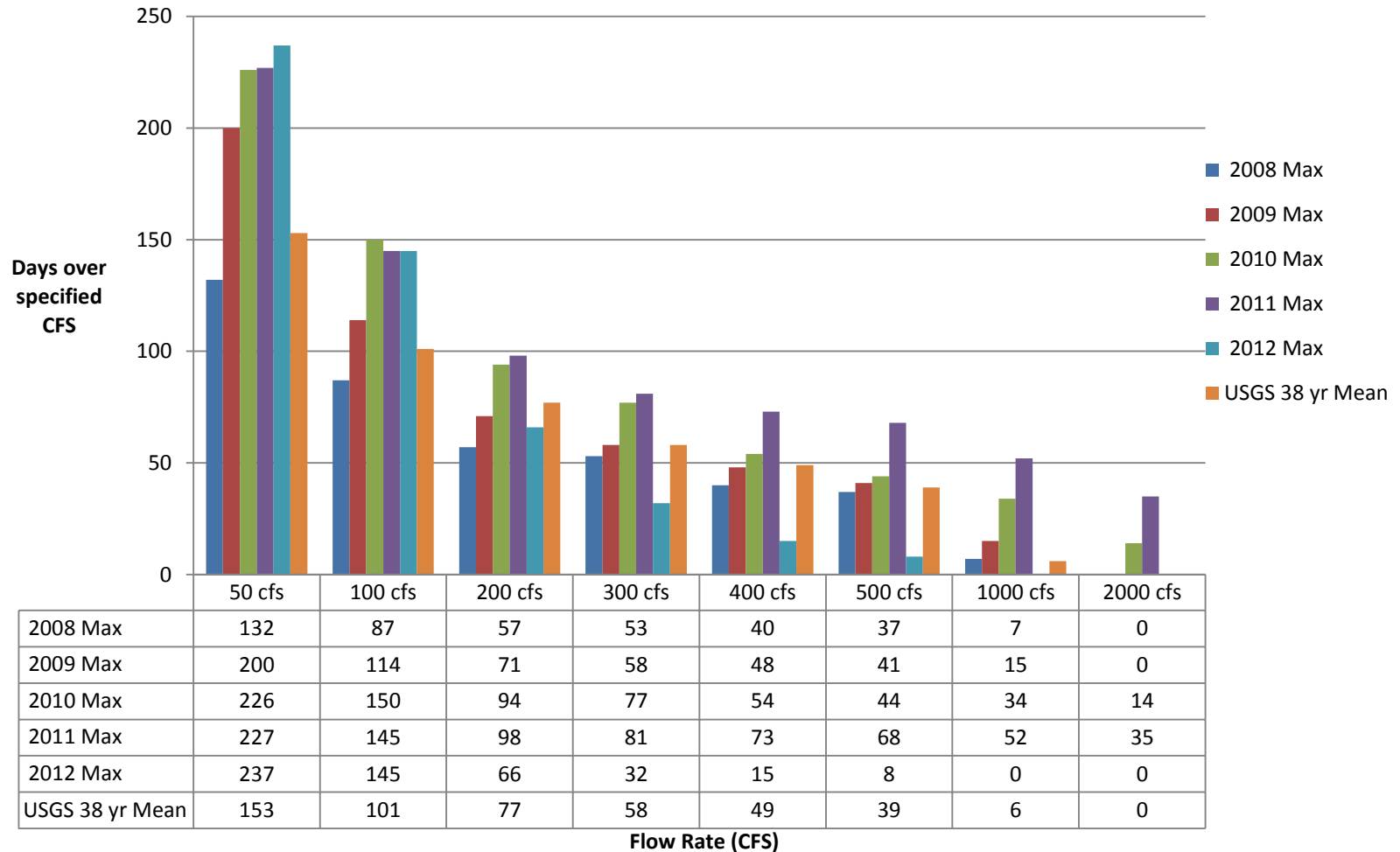


	50 cfs	100 cfs	200 cfs	300 cfs	400 cfs	500 cfs	1000 cfs	2000 cfs
2008 Min	78	54	41	26	12	3	2	0
2009 Min	107	58	42	34	29	21	4	0
2010 Min	150	88	65	50	41	38	26	6
2011 Min	155	93	72	67	61	59	42	12
2012 Min	109	55	10	0	0	0	0	0
USGS 38 yr Mean	153	101	77	58	49	39	6	0

Flow Rate (CFS)

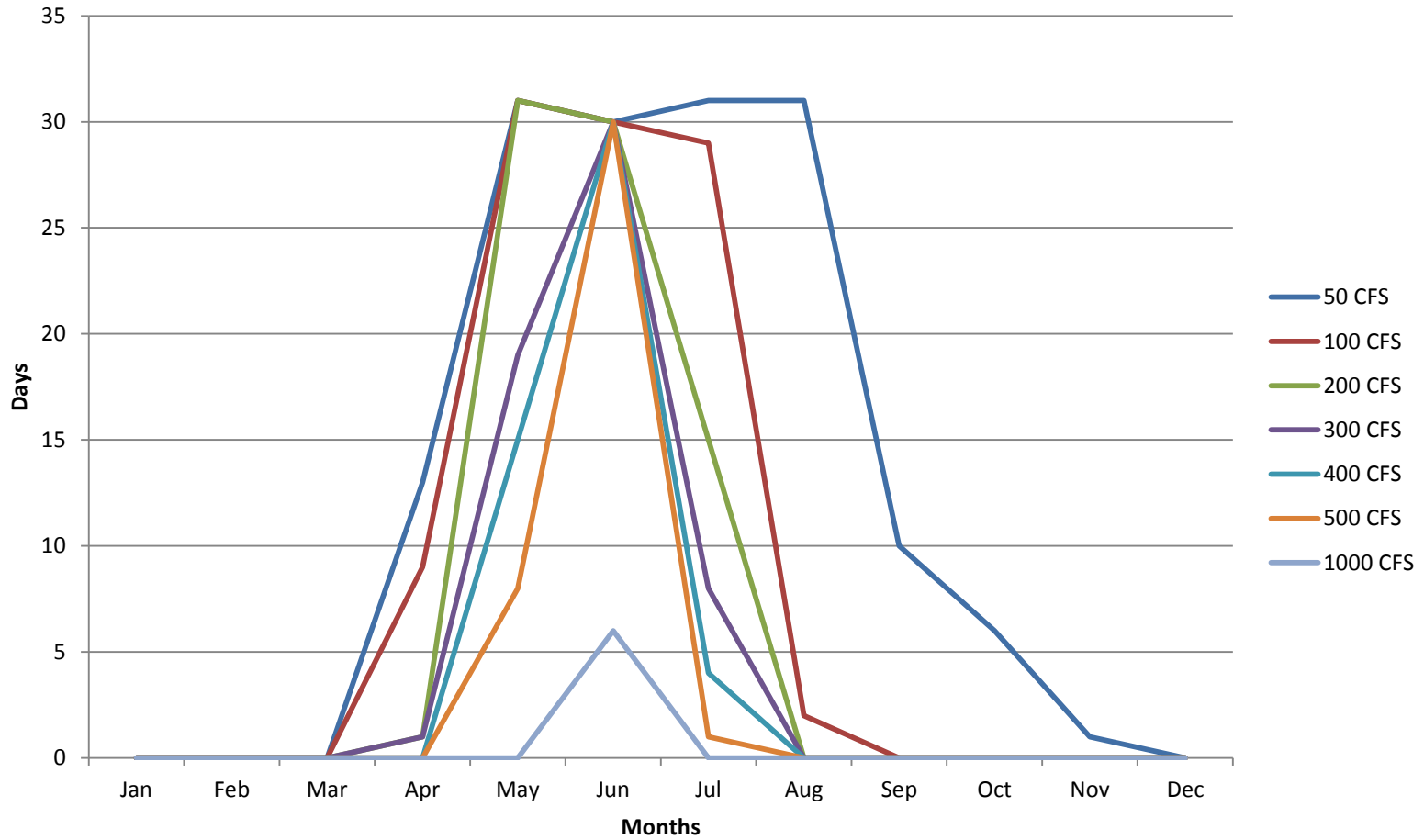
Stream Flow at Lincoln St for max flow rate

**Distribution of Days at Different Maximum Flow Rates
(highest flow rate of the day)**



USGS 38 year Avg for Poudre

USGS 38 Year Days at Specific Flow Rates per Month



USGS 38 year Avg for Clear Creek

Golden White Water Park flows (Clear Creek)
days over a given flow rate per month

